



96-98 Victoria Road, Wallasey, CH45 2JF

Price £130,000



Nestled in the charming Victorian quarter of New Brighton, this commercial property presents a unique opportunity for commercial interests. Spanning an impressive 549 square feet, the property boasts a versatile layout that includes a commercial shop unit, making it an ideal investment for those seeking a rental income.

The location on Victoria Road places you just a stone's throw from the picturesque promenade, allowing for leisurely strolls along the waterfront and easy access to local amenities. The shop floor area is well-suited for a variety of business ventures, while the inclusion of a WC and kitchen area adds to the convenience of the space.

Do not miss the chance to explore the possibilities that this commercial unit has to offer in the vibrant community of New Brighton.

- Set In The Victorian Quarter
- Large Commercial Unit
- WC
- Kitchen Area
- High Foot Flow Area
- Viewing Essential
- EPC Rating TBC

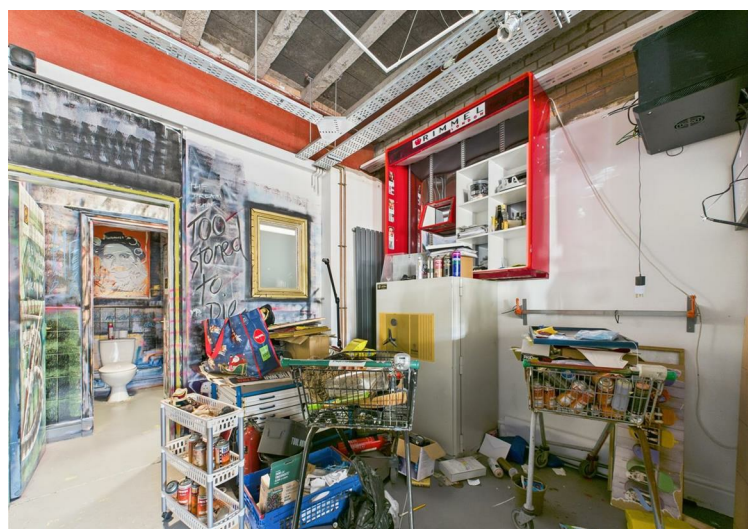
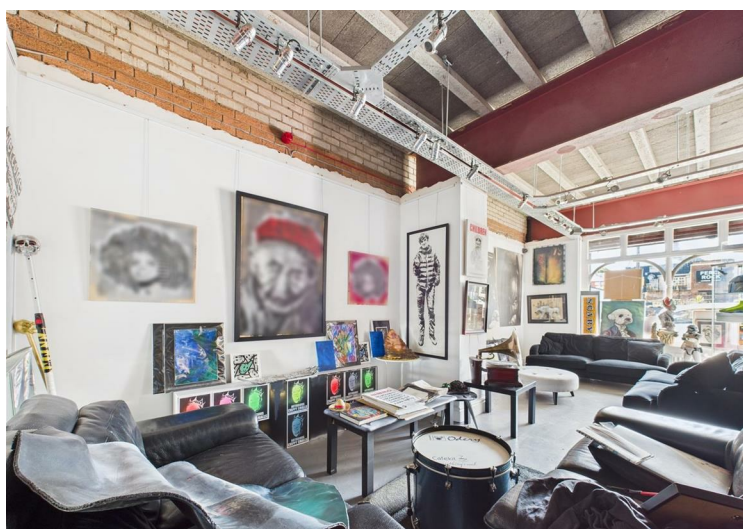
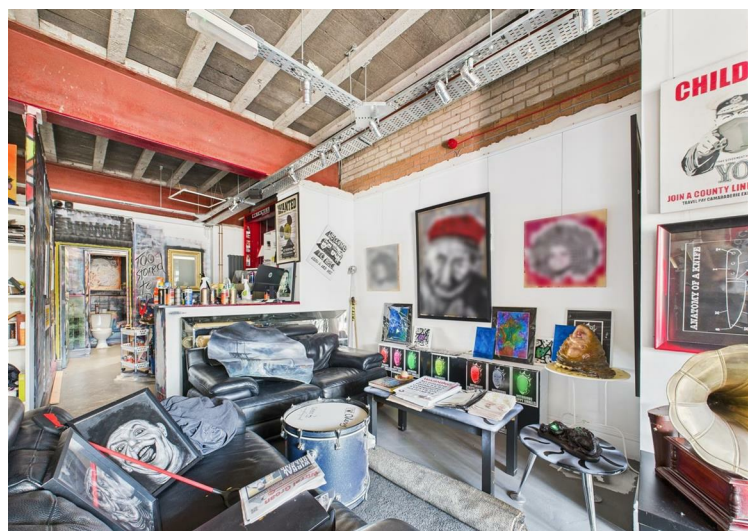
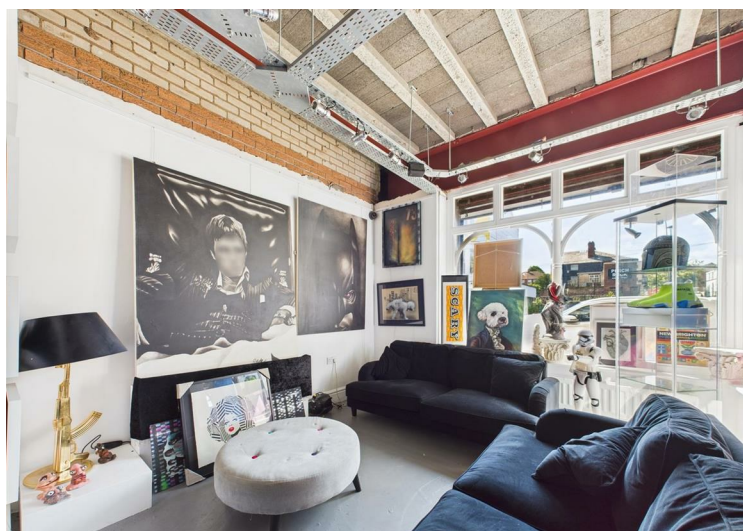


Viewing

To arrange a viewing on this property or require further information please contact one of our team on 0151 638 6313



Energy Efficiency Rating		
	Current	Potential
Very energy efficient - lower running costs		
(92 plus) A		
(81-91) B		
(69-80) C		
(55-68) D		
(39-54) E		
(21-38) F		
(1-20) G		
Not energy efficient - higher running costs		
England & Wales		
EU Directive 2002/91/EC		



These particulars, whilst believed to be accurate are set out as a general outline only for guidance and do not constitute any part of an offer or contract. Intending purchasers should not rely on them as statements of representation of fact, but must satisfy themselves by inspection or otherwise as to their accuracy. No person in this firm's employment has the authority to make or give any representation or warranty in respect of the property.